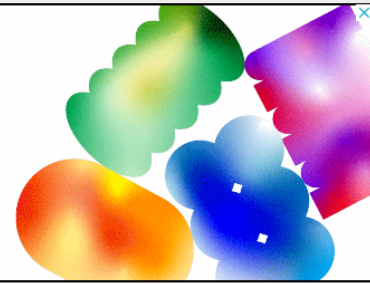


Advertisement

AND CIRCULATION.



frieze

FEATURES

INTERVIEWS

LISTINGS & REVIEWS

OPINION

STUDIOS

VISIT

SHOP

VIP

SIGN IN



Sex Work

A new section for 2017, curated by Alison Gingeras, exploring feminist art and radical politics

IN SEX WORK | 20 JUL 17



New for 2017, independent curator and scholar Alison Gingeras presents *Sex Work: Feminist Art & Radical Politics*.

The section at Frieze London will be dedicated to women artists working at the extreme edges of feminist practice since the 1960s, and the galleries who supported them, including: Galerie Andrea Caratsch presenting Betty Tompkins; Blum and Poe presenting Penny Slinger; Richard Saltoun presenting Renate Bertlmann; Salon 94 presenting Marilyn Minter; and Hubert Winter presenting Birgit Jürgenssen.

Sex Work, Gingeras has said, will 'pay homage to artists who transgressed sexual mores, gender norms and the tyranny of political correctness and were frequently the object of censorship in their day' in addition to 'highlighting the seminal role galleries have played in exhibiting the radical women artists who were not easily assimilated into mainstream narratives of feminist art.'

'These galleries often blazed a trail for museum exhibitions', she explains. 'Many figures in this section - such as Renate Bertlmann, Birgit Jürgenssen, Penny Slinger and Betty Tompkins - were too transgressive to be included in anthologizing museum shows, which arguably forged a consensual canon for important feminist art. The belated reception of these pioneering women has had a profound impact on many artists working today and resonate more than ever with the new feminisms that are taking shape in response to

Advertisement

Henie Onstad



LISE WILHELMSSEN
ART AWARD
PROGRAMME

13.11.2020 — 31.01.2021

MORE LIKE THIS



Dorothy Iannone and Juliette
Blightman's Daily Pleasures

contemporary political realities.'

Galleries Participating in *Sex Work* :

[Air de Paris, Paris](#) [Dorothy Iannone](#)

Baldwin Gallery, *Aspen Marilyn Minter*

[Blum & Poe, Los Angeles](#) [Penny Slinger](#)

[The Box, Los Angeles](#) [Judith Bernstein](#)

[Galerie Andrea Caratsch, St. Moritz](#) [Betty Tompkins](#)

[Karma International, Zurich](#) [Judith Bernstein](#)

[David Lewis, New York](#) [Mary Beth Edelson](#)

[lokal_30, Warsaw](#) [Natalia LL](#)

[Regen Projects, Los Angeles](#) [Marilyn Minter](#)

[Salon 94, New York](#) [Marilyn Minter](#)

[Richard Saltoun, London](#) [Renate Bertlmann](#)

[Galerie Hubert Winter, Vienna](#) [Birgit Jürgenssen](#)

Renate Bertlmann, *Eva im sack* ('Eva in bag', 2010) (detail). Digital print, 80 x 80 cm. Courtesy: the artist and Richard Saltoun, London

TAGS

[Frieze London 2017](#), [Sex Work](#), [Feminism](#), [Alison Gingeras](#)

SHARE THIS



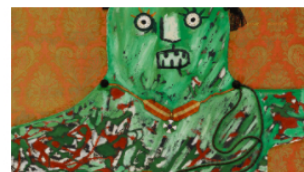
Glitching the Master's House:
Legacy Russell and Momtaza Mehri
in Conversation



Notes from the Bunker: Re-
Reading Jacqueline Harpman



'The Older I Get, the Bigger I Want
These Women to Be!'



'Is Humanism Dead?' Asks Redux
of 1959 MoMA Show



Lynda Benglis Pours One Out



How Nicole Gravier Demolishes
Domesticity



VALIE EXPORT's Transgressive
Show for the 1980 Venice Biennale
Reappears in London





The Wing: Where Maximalist Kitsch and Corporate Feminism Come to Play



Breastfeeding Mothers Protest at Mexico City's Museum of Modern Art



MORE LIKE THIS



Report from Bangkok: Biennials in Crisis



The Racial Imaginary Institute's Quiet Takeover of David Kordansky



This Year's Steirischer Herbst Switches Between Programmes



Hélio Oiticica's Dance with Relational and Formalist Aesthetics



The Company

About
Careers
Advertise
Contact Us

Help

Privacy Policy
Legals
Cookie Policy

Follow Us

Facebook
Twitter
Instagram